



# COOLERS

## SCARLET 298 2T

*PLUG-IN AND SWITCH ON YOUR BUSINESS!*





eptarefrigeration

# wine COOLERS

## SCARLET 298 2T

PLUG-IN AND SWITCH ON YOUR BUSINESS!

Temperatura Doppia / Dual Temperature  
SUPERIORE / UPPER: +5°C ÷ +12°C  
INFERIORE / LOWER: +5°C ÷ +22°C

Dimensioni Mobile (mm)  
Cabinet Dimensions (mm)  
Larghezza / Width: 598  
Profondità / Depth: 705  
Altezza / Height: 1210

Volume Netto (Lt)  
Net Volume (Lt)  
275

Capacità Bottiglie Bordolesi (0.75 Lt)  
Bordeaux Bottles Capacity (0.75 Lt)  
110

Ripiani in Legno  
Wood Shelves  
8 + 1

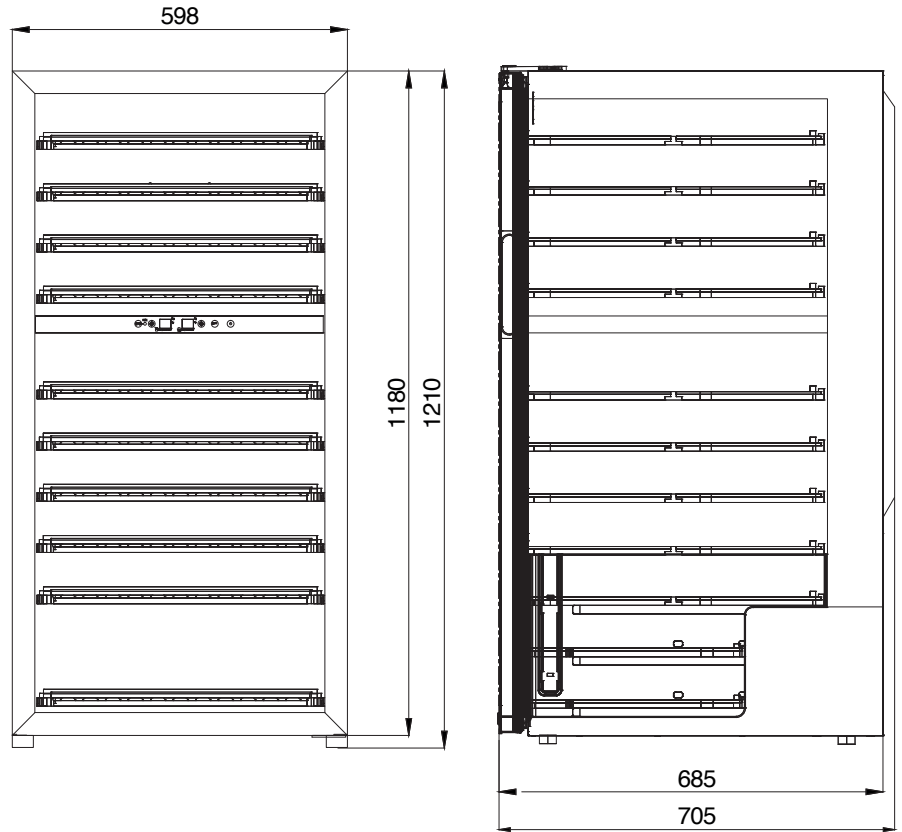
Refrigerazione  
Cooling System  
Ventilata / Ventilated

Gas Refrigerante  
Refrigerant Gas  
R600a

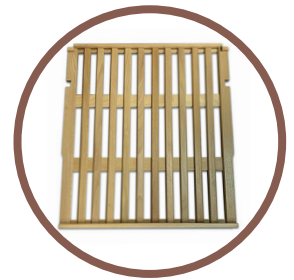
Peso Lordo / Netto (Kg)  
Gross / Net Weight (Kg)  
78 - 70

Dimensioni Imballo (mm)  
Packaging Dimensions (mm)  
Larghezza / Width: 655  
Profondità / Depth: 780  
Altezza / Height: 1300

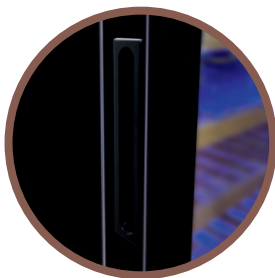
Carico  
Loading  
Container 20" (ft): 23  
Container 40" (ft): 48  
Container 40"HQ (ft): 96



CONTROLLORE ELETTRONICO /  
ELECTRONIC CONTROLLER



8 + 1 RIPIANI IN LEGNO /  
8 + 1 WOOD SHELVES



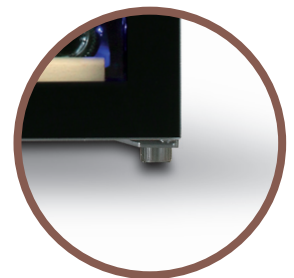
MANIGLIA INCASSATA /  
HANDLE



CHIUSURA A CHIAVE /  
LOCKING SYSTEM



INTERNAL BLUE LED LIGHTS



4 PIEDINI /  
4 ADJUSTABLE FEET

Follow us on:



by Epta

PLUG-IN AND SWITCH ON YOUR BUSINESS!



EPTA SpA - Unità Locale CASALE MONFERRATO (AL) - via Achille Grandi, 43 - 15033 - Tel. +39 0142 436111 - Fax +39 0142 781540

[www.iarp-plugin.com](http://www.iarp-plugin.com)